



IDS GeoRadar
Company
Presentation



IDS GeoRadar is Part of Hexagon Geosystems

Shaping Smart Change in Some of the Largest and Most Vital Industries in the World

3.5 bn EUR in sales | Approx. 19,000 employees in 50 countries | 10-12% of net sales invested in R&D

HEXAGON DIVISIONS



HEXAGON OVERVIEW



AGRICULTURE



GEOSPATIAL



GEOSYSTEMS



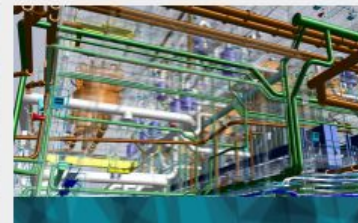
MANUFACTURING INTELLIGENCE



MINING



POSITIONING INTELLIGENCE



PPM



SAFETY & INFRASTRUCTURE



JOIN US FOR HxGN LIVE
12-15 JUNE, 2018
LAS VEGAS, NV



HISTORY OF INNOVATION

Pioneer dna since 1991

**LEADER IN MULTI-FREQUENCY, MULTI-CHANNEL
GROUND PENETRATING RADAR (GPR) SYSTEMS**

**WE INTRODUCED THE IBIS RADARS, THE
FIRST COMMERCIAL GROUND-BASED
INTERFEROMETRIC SAR RADARS IN THE
MARKET**

**TODAY, WE ARE THE TECHNOLOGY LEADER
FOR SLOPE STABILITY MONITORING**

IDS GeoRadar HQ

Via Augusto Righi, 1

Current world-wide dealer network



A great team of distributors

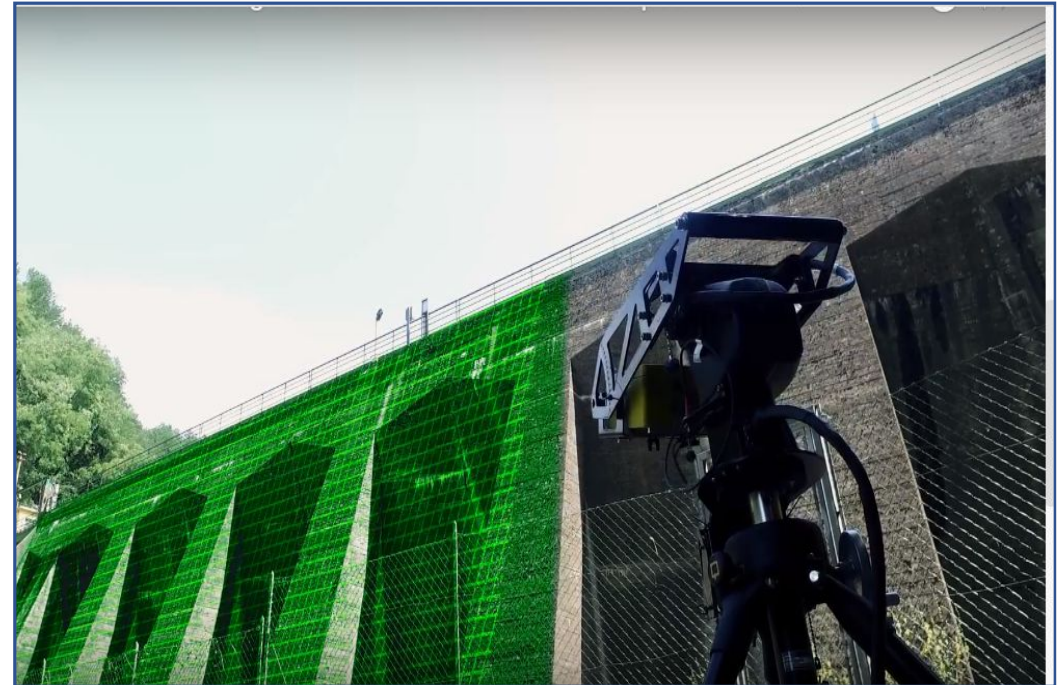
All rights reserved to IDS GeoRadar

GROUND PENETRATING RADAR



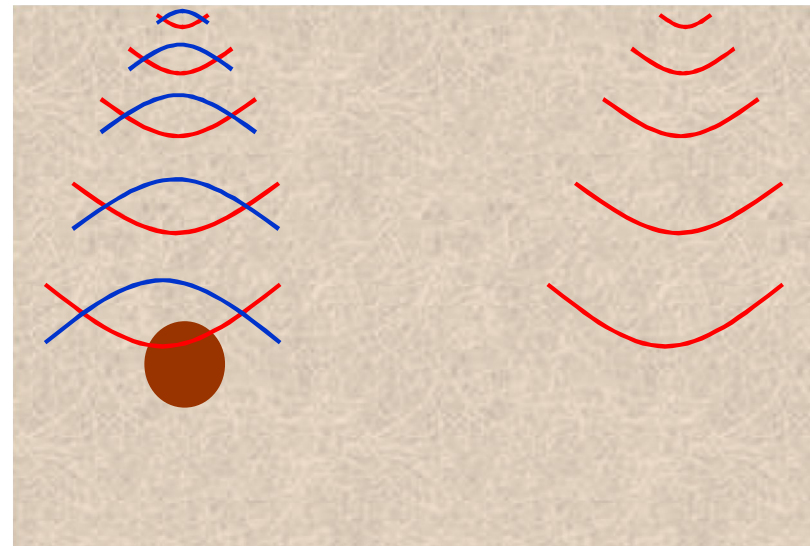
HIGH-RESOLUTION SUBSURFACE
INVESTIGATION OF THE HEARTH

GROUND BASED INTERFEROMETRIC RADAR



SIMPLIFY CRITICAL MONITORING

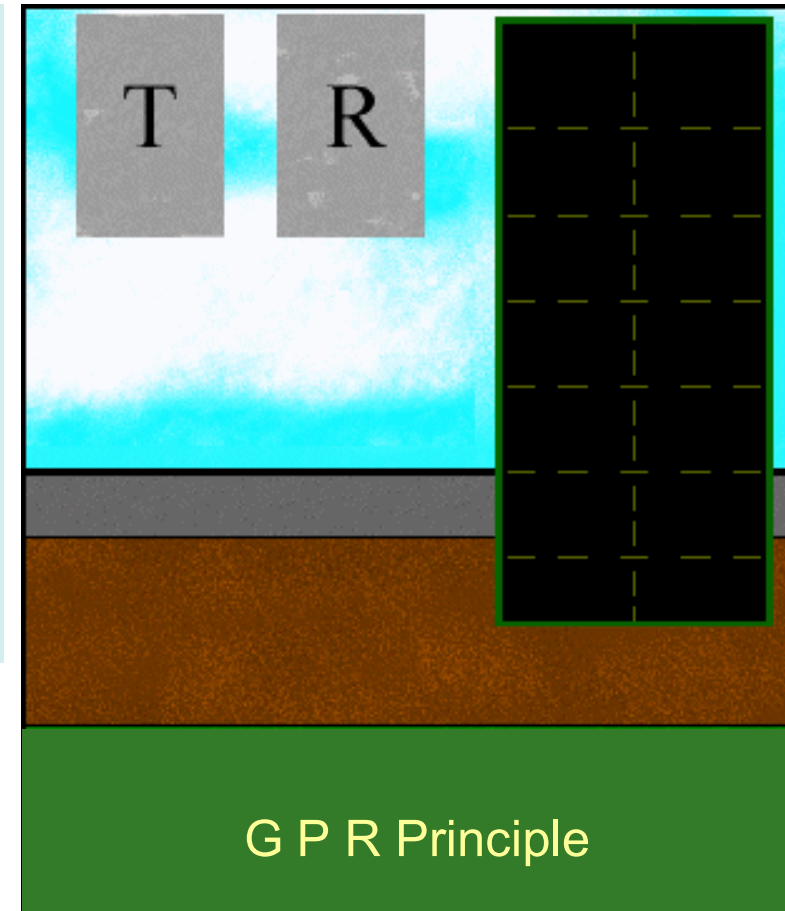
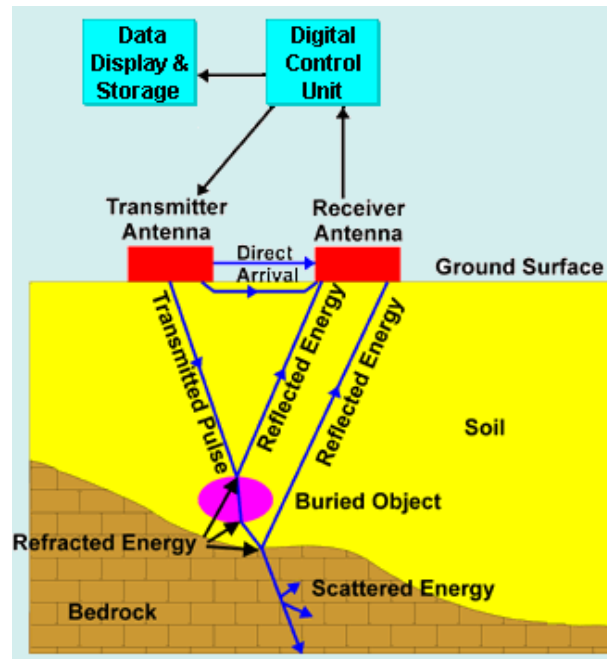
- ✓ *The radar transmits a pulse of EM wave through an antenna transmitter (TX)*
- ✓ *The EM energy reflected back from any discontinuity (target) is detected and recorded by the antenna receiver (RX).*
- ✓ *The time delay (in nsec) contains information on the target depth; time delay depends on subsoil velocity of propagation of EM wave*
- ✓ *The penetration depth of any EM signal and its resolution depends on antenna frequency, the power the EM wave transmitter, and the electrical properties of the ground.*



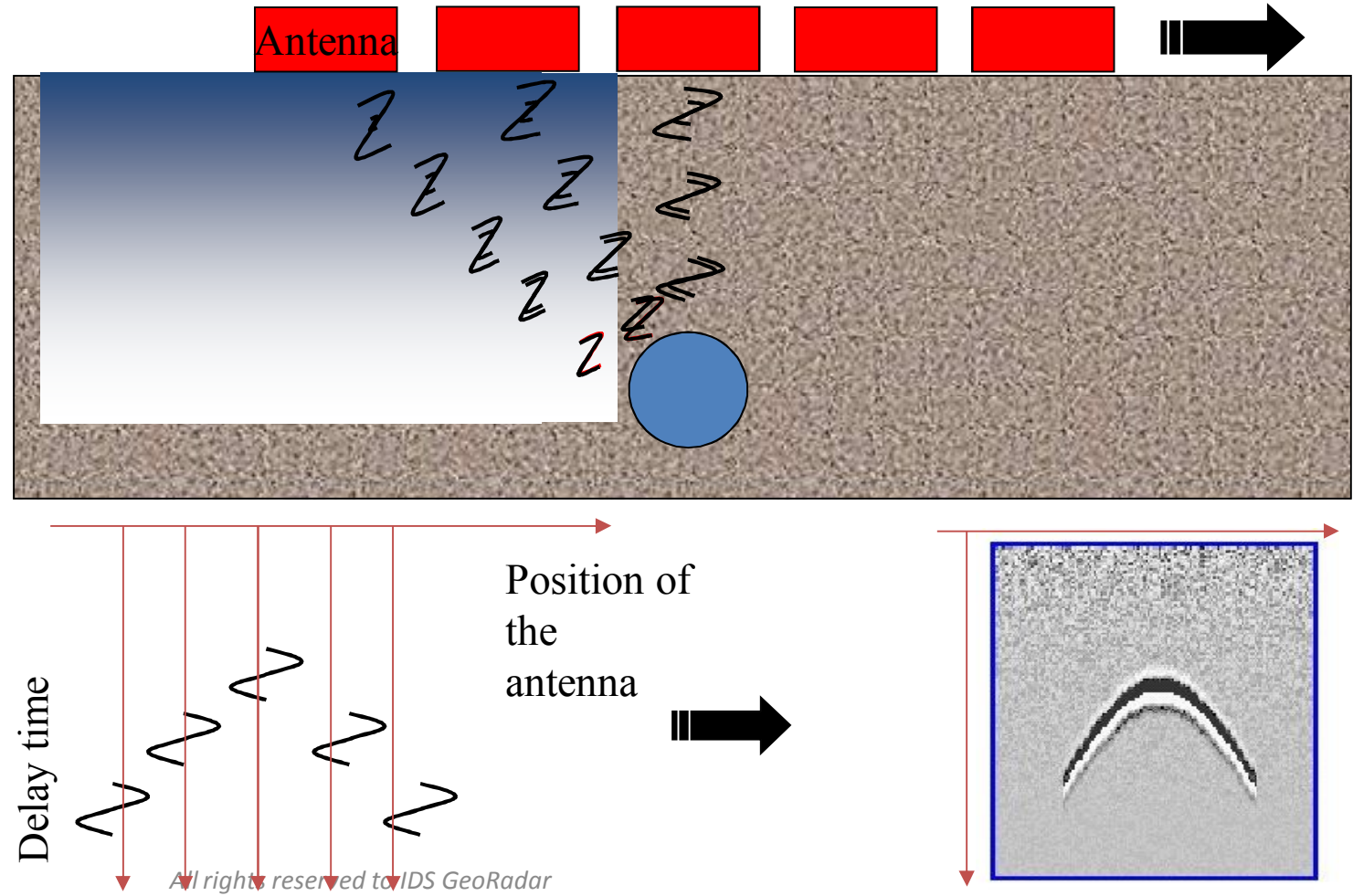
Radar Map Generation

GPR is a method for shallow, high-resolution, subsurface investigations of the earth.

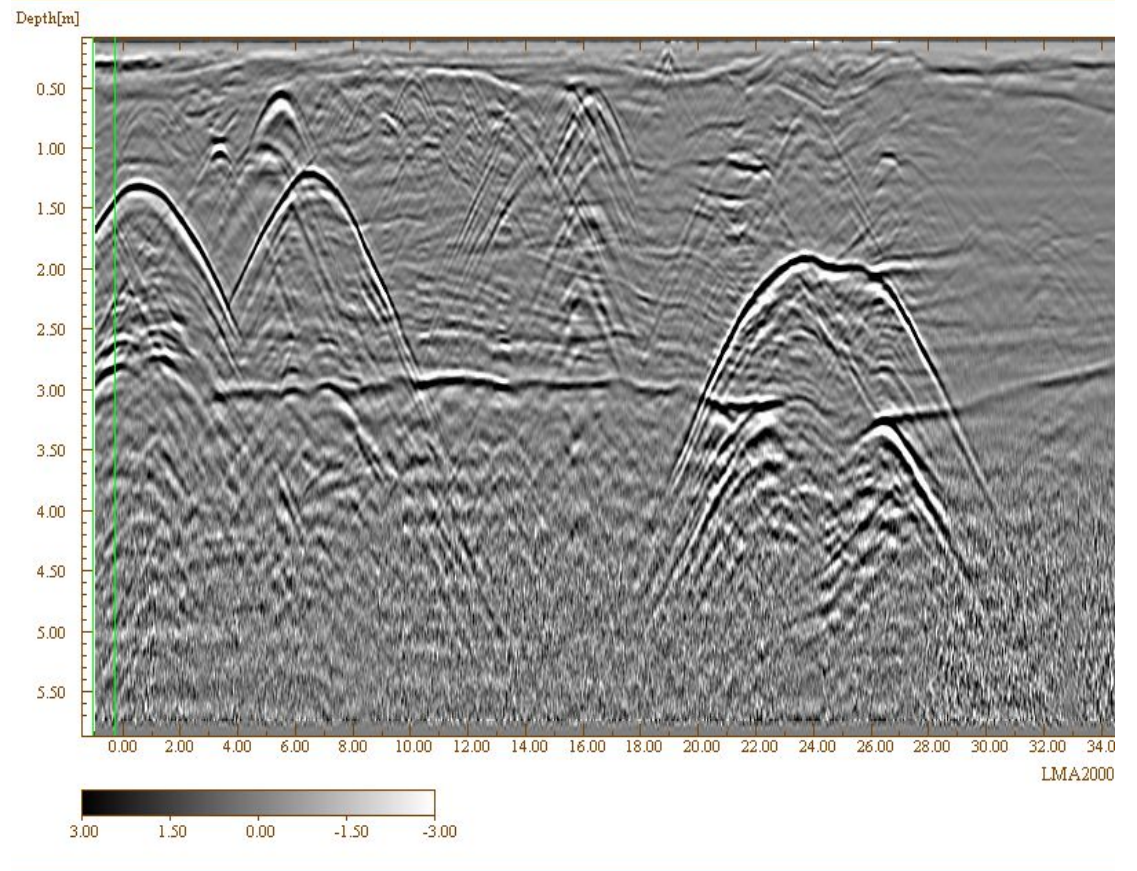
GPR uses high frequency pulsed electromagnetic waves (from 25 MHz to 3,000 MHz) to collect subsurface information, to outline the geometry of the subsoil.



Radar Map Generation



Data interpretation of geological features



Market of IDS GeoRadar today

Served by two business units: Geosystems and Mining



Mining



Utility Detection and Mapping



Structural and Slope Monitoring



**Railway
Maintenance**



**Construction
Engineering**



**Road
Maintenance**



**Geology &
Environment**



Archaeology

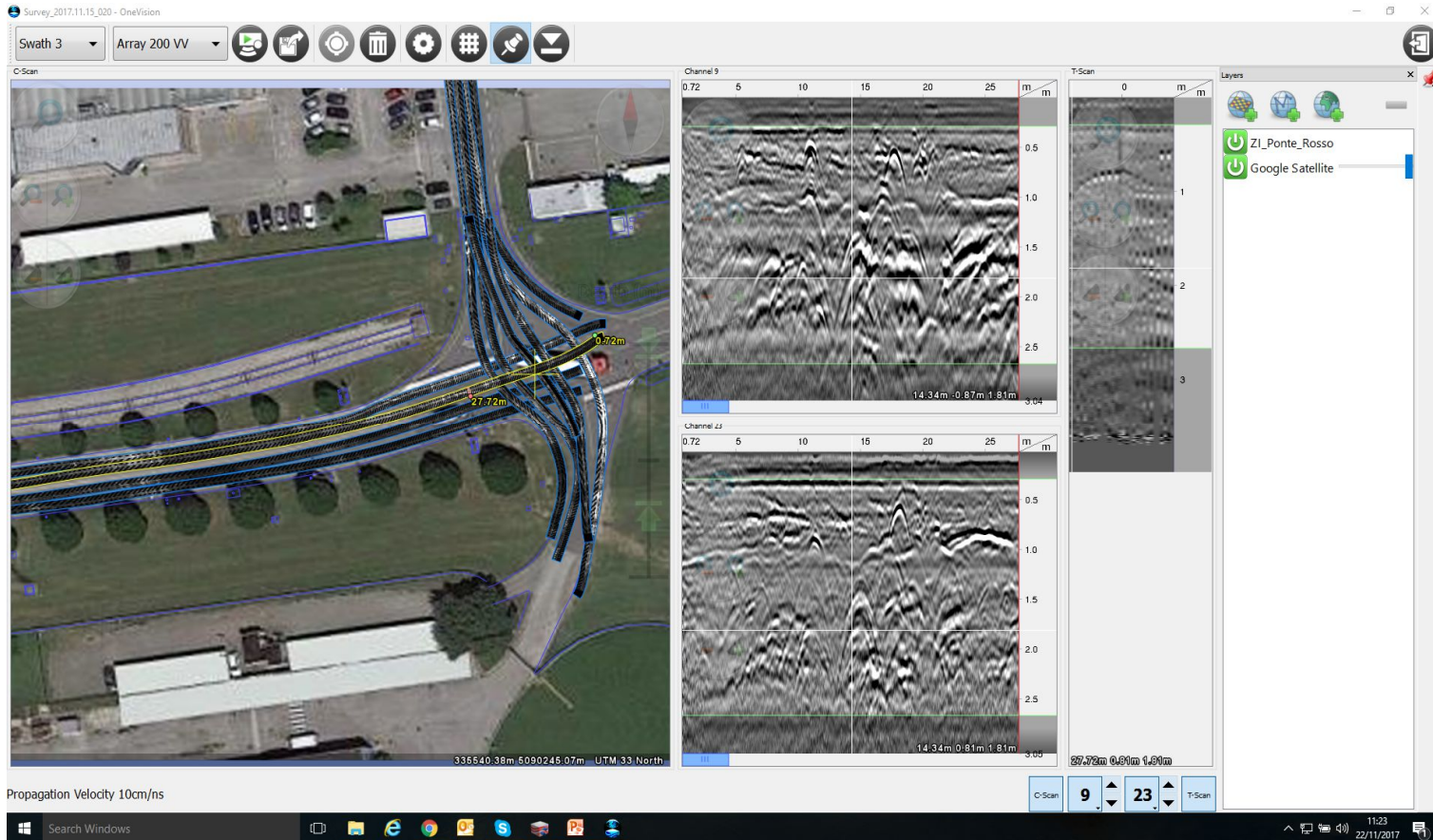


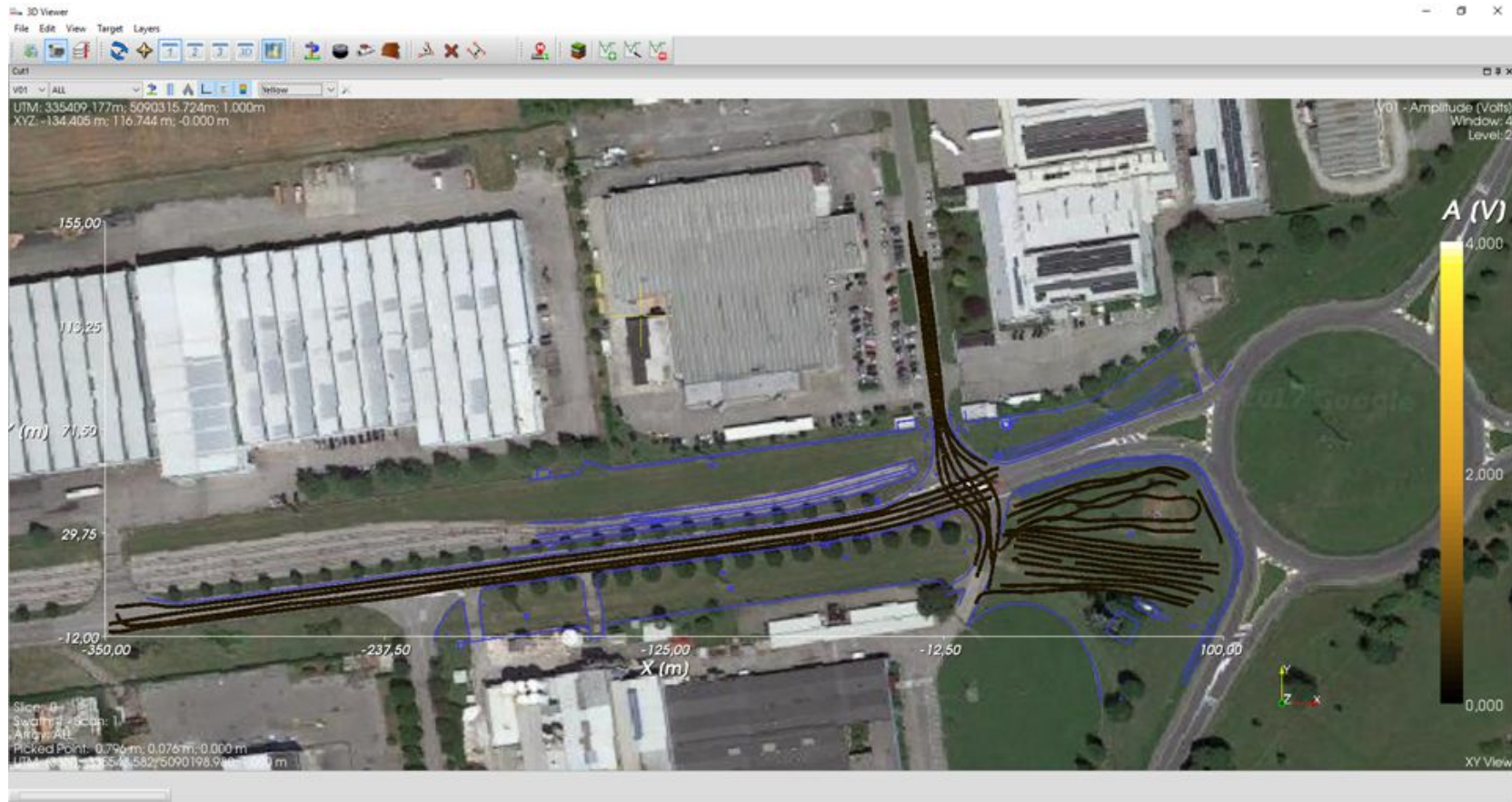


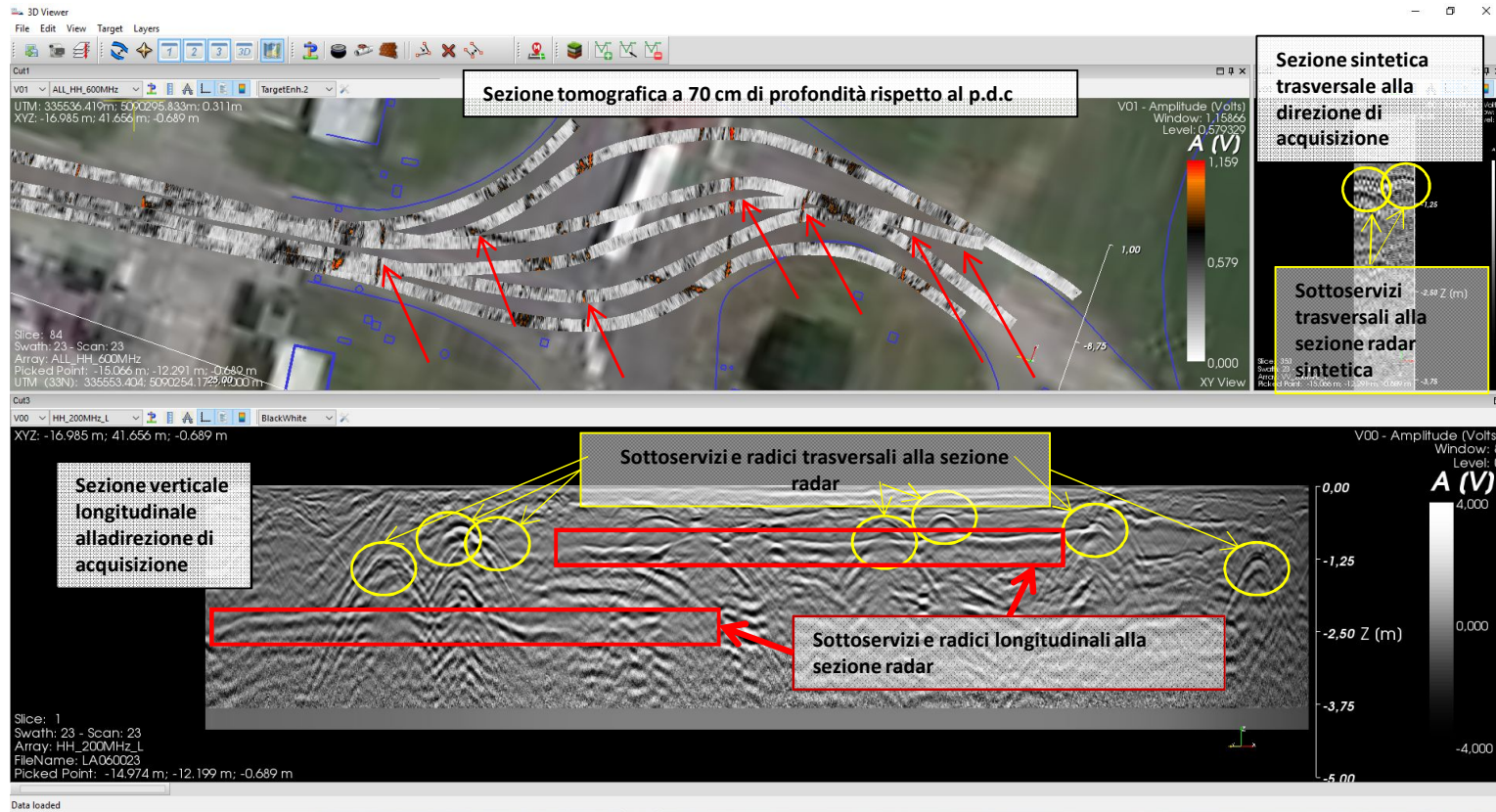
Zona industriale Ponte rosso - Pordenone
Il riquadro in rosso è l'area investigata

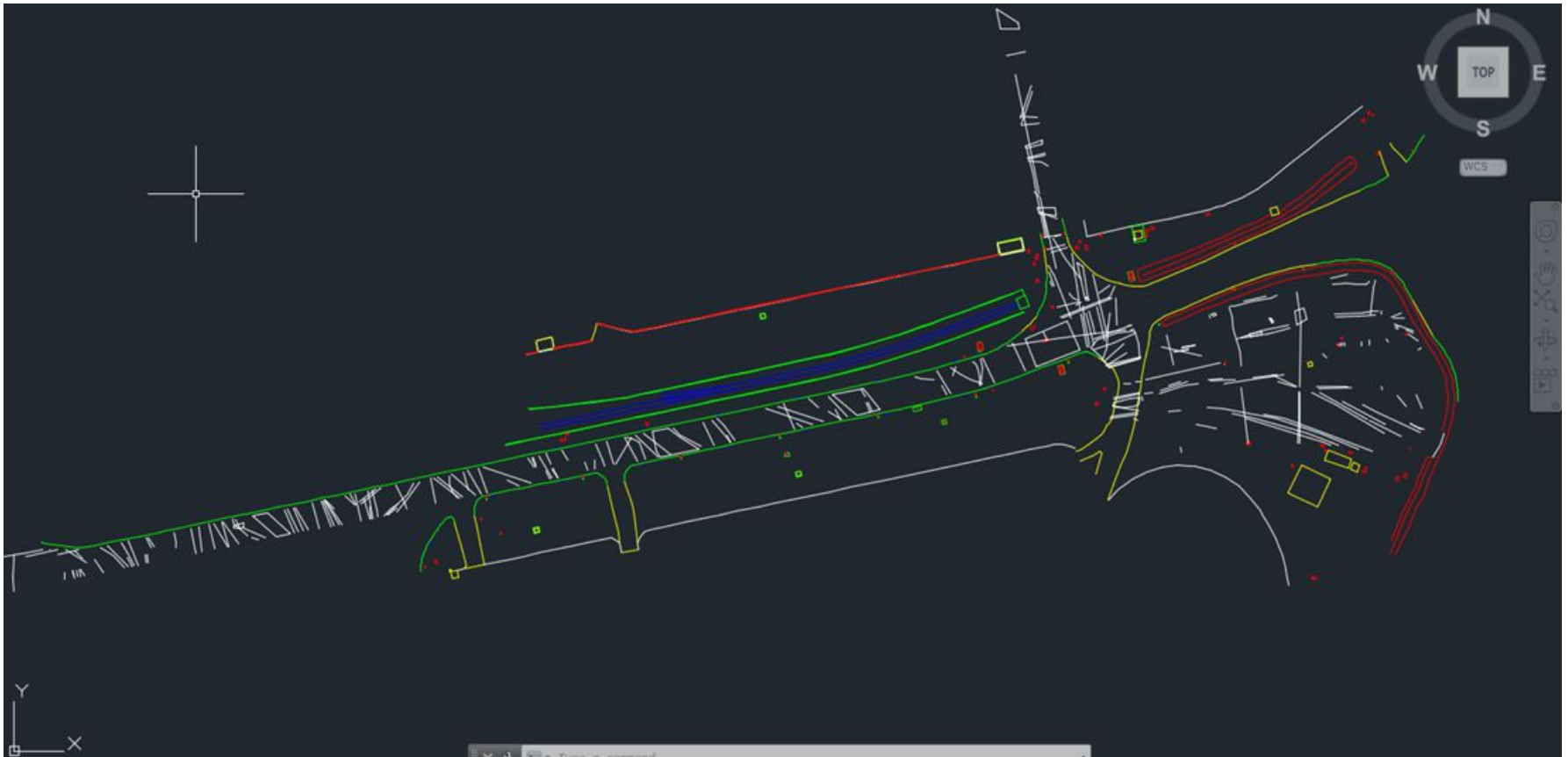


PORDENONE Case study













IDS GeoRadar

**Company
Presentation**

Grazie per l'attenzione



All rights reserved to IDS GeoRadar